

# TECHNOTE 1401

## ISSUED

March 2014

## SUBJECT

Release of MCEGold® 2.6.2 SP2. TechNote 1401 supercedes TechNote 1303.

## DESCRIPTION

The MCEGold 2.6.2 SP2 release contains the following features: *MTAP* ID Link Configuration to assist in auto location of an asset, addition of a Asset Management Preferences function used to select the Default Detach Database Option, an asset preview pane was added to the WatchList, and the addition of Power Results and Time Domain buttons on the Power Phasor window.

MCEGold 2.6.2 SP2 is available on M and H series testers only.

## MCEGOLD 2.6.2 SP2 INSTALLATION

### Note:

- If you have a Microsoft Windows XP operating system, contact PdMA Tech Support (813-621-6463 ext. 251) prior to the 2.6.2 SP2 installation.

- If you have MCEGold prior to 2.4, contact PdMA Tech Support (813-621-6463 ext. 251) prior to the 2.6.2 SP2 installation.

- If using MCEGold 2.5.1 SP2 or earlier a full uninstall of MCEGold is required. If using MCEGold 2.6.1 or MCEGold 2.6.2 the uninstall is not required; go to MCEGold 2.6.1 Update on page 4.

- MCEGold 2.6.2 SP2 is not compatible with testers requiring a Data Acquisition Card (DAQ).

- For Stand Alone and Field Testers, installing MCEGold 2.6.2 SP2 will require an upgrade of the Microsoft SQL Server 2005 to SQL Server 2008, if not

already completed. This does not apply to Servers on a Network.

- To ensure application accessibility, the new default installation location has been set to C:\PdMA Corporation.

- Databases attached to MCEGold 2.6.2 SP2 must be from MCEGold 2.4 or later and once updated with 2.6.2 SP2 *will not* be compatible with older versions of MCEGold.

- Assets opened with MCEGold 2.6.2 SP2 *will not* be compatible with older versions of MCEGold.

### Minimum Requirements:

Computer	Dell Latitude E6430 Laptop*
Processor	2+ GHz Intel i5 or equivalent
Resolution	1600 x 900
Operating System	Microsoft® Windows 7 SP1 32-or 64 bit**
Memory	2.0+ G RAM
Ports/Drives	(2) USB Ports in Rear or Side (M-Series tester has (1) USB Port)
Drives	24x CD-RW + DVD Drive
Hard Disk	20G Available

\* Using any other computer manufacturer in conjunction with the PdMA software may result in erratic computer behavior; not limited to but including:

- Power Management Issues
- Lock-up
- Communication Port Malfunction
- Driver Incompatibility
- Display Errors
- SQL Database Incompatibility
- Network Synchronization Issues.

\*\* For International Customers: Windows 7 Ultimate 32 or 64-bit.

## Server Database Update for Network Users

**Note:** Ensure the user account used to update the server has “sysadmin” permissions.

There is a separate application on the Installation Disc to update the network database on the server. **The database must be updated on the server first, then the desktops and field testers.**

If the update is installed on a network field tester before the server database is updated, a warning message appears informing you the database is an old version and to contact your system administrator.

1. Back up the MCEGold database.
2. Insert the disc into the drive. If the disc starts automatically, click **Exit** and proceed to the next step.
3. Locate the MCEGold Database Server Update folder on the MCEGold 2.6.2 SP2 Disc.
4. Click on the MCEGold Database Server Update.exe file.
5. The Server Information window opens. Fill in the Server, Database, Login, and Password information.
6. Click **Run Update**. The progress status will display on the window.
7. When the update complete message displays, close the window.

## Stand Alone Users/Field Tester

**Note:** MCEGold 2.6.2 SP2 requires an upgrade of the Microsoft SQL Server 2005 to SQL Server 2008. Therefore, any stand alone database opened will be updated to SQL Server 2008 and will no longer open on another machine running an older version of MCEGold using SQL Server 2005.

### MCEGold Prior to 2.4 or Windows XP

If you are updating from an MCEGold version older than 2.4 or Microsoft Windows XP operating system you must first call PdMA Tech Support (813-621-6463 ext. 251).

### MCEGold 2.4 or 2.5.1

From your Control Panel/Program and Features, verify which version of Microsoft SQL Server is installed on your computer.

If Microsoft SQL Server 2005 exists on your computer proceed to the *Uninstall SQL Server 2005* section followed by the *Uninstall MCEGold* section below. There are several components that begin with Microsoft SQL Server 2005, they should all be removed EXCEPT Microsoft SQL Server 2005 Compact Edition (ENU).

If Microsoft SQL Server 2008 and possibly Microsoft SQL Server 2005 Compact Edition (ENU) exists on your computer do not uninstall them. Go to the section *Uninstall MCEGold*.

## Uninstall SQL Server 2005

1. Select Start, Control Panel, and click the Programs and Features icon.
2. In the Uninstall or change a program window scroll down to locate and select Microsoft SQL Server 2005 from the list.
3. Click **Uninstall** - located above the list and follow the on screen instructions.
4. Click **Finish** when the “Uninstall Complete” message is received. Do not close the window.
5. Repeat from step 2 uninstalling all components that begin with Microsoft SQL Server 2005. DO NOT uninstall Microsoft SQL Server 2005 Compact Edition (ENU).
6. Close the Uninstall or change a program window when all components have been uninstalled.
7. Reboot the computer.

## Uninstall MCEGold

### Backup

Before beginning the MCEGold uninstall, copy the MCECal.xml and Emaxprb.xml files and complete Templates folder to a safe location and make note of the location.

The default location for the files is listed below, however you may have chosen a different location during the original installation.

C:\Program Files\PdMA Corporation\MCEGold\Mce  
C:\Program Files\PdMA Corporation\MCEGold\Emax  
C:\Program Files\PdMA Corporation\MCEGold\Report

1. Select Start, Control Panel, click on the Programs and Features icon.

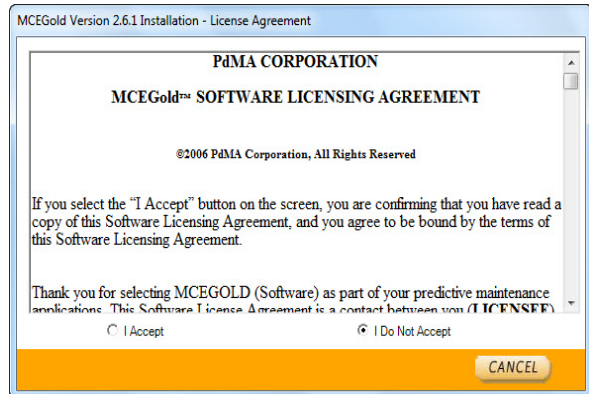
2. In the Uninstall or change a program window scroll down to locate and select the MCEGold version from the list.
3. Click Uninstall located above the list and follow on screen prompts.
4. Click **Finish** when the “Uninstall Complete” message is received.
5. Locate the PdMA MCEMAX® Tester (Driver Removal) file and click **Uninstall** located above the list and follow the on screen prompts.
6. Click **Finish** when the “Uninstall Complete” message is received.
7. Locate the C:\ProgramFiles\PdMACorporation\ folder and delete it. The subfolders will be deleted also. After the installation of MCEGold 2.6.2 SP2 the new folder location will be C:\PdMA Corporation\....
8. Go to step one in the *Install - MCEGold 2.6.2 SP2* section.

### Install MCEGold 2.6.2 SP2

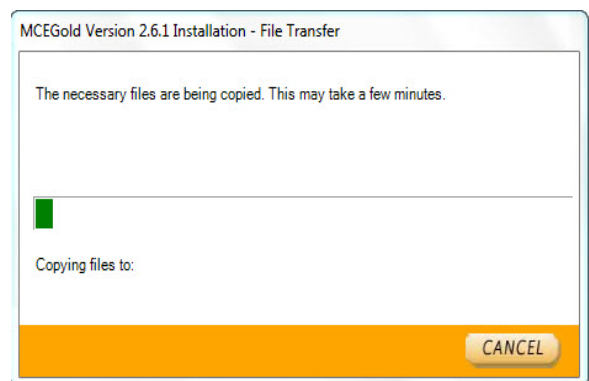
Note: If you have MCEGold 2.6.1 go to MCEGold 2.6.1 Update on the next page.

1. Insert the MCEGold 2.6.2 SP2 disc into the drive. If the installation does not begin automatically, run Setup.exe from the disc. (Select Run setup.exe from the AutoPlay window).
2. The License Agreement window opens. Read the PdMA license and select the “I Accept” option button. The **Next** button becomes visible. Click **Next**.

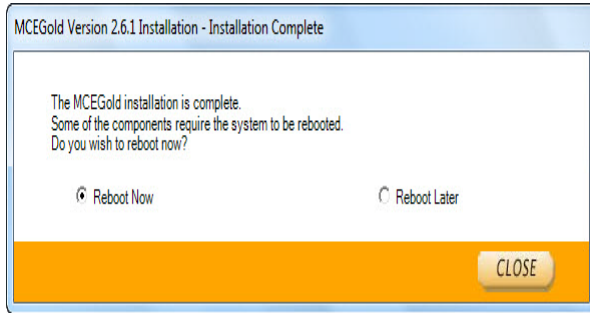
Note: If you do not accept the terms, the **Next** button is not visible, you can only click **Cancel**, which closes the software.



3. In the License Key window enter your Company Name and License Key exactly as provided by PdMA. It is not case sensitive. The License Key is **NOT** the same as the Module Activation Key, which activates various modules.
4. Click **Submit** (located to the right of the Company Name space). After the license has been verified the **Next** button appears. Click **Next**.
5. In the Installation Path window, accept the default shown in the textbox (recommended) for the location to install the MCEGold program folder or using the drop-down list select a alternate location, make a note of it for future use, and click **Next**.
6. When prompted, click **Install Components**.
7. When the installation of components is complete the **Next** button appears. Click **Next**.
8. A progress bar shows the progress of copying files to your computer.



- When the installation is complete you must reboot your system. Select the Reboot Now option and click **Close**.



After rebooting, locate and copy the backup MCECal.xml and Emaxprb.xml files and the Template folder back into their appropriate locations in

- C:\PdMA Corporation\MCEGold\Mce
- C:\PdMA Corporation\MCEGold\Emax
- C:\PdMA Corporation\MCEGold\Report

- Answer Yes to the “OK to overwrite existing folder” inquiry.
- Remove the MCEGold 2.6.2 SP2 Disc and reboot the computer.

### MCEGold 2.6.1 Update

#### Install MCEGold 2.6.2 SP2

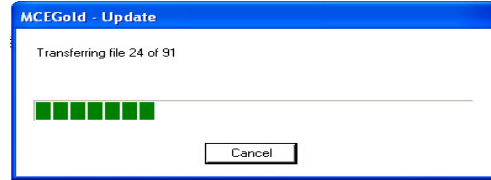
- Insert the MCEGold 2.6.2 SP2 disc into the drive. It will auto-start to the InstallShield program. However, if it does not begin automatically, run Setup.exe from the disc. (Select Run setup.exe from the AutoPlay window).
- The Installation Update Window opens.



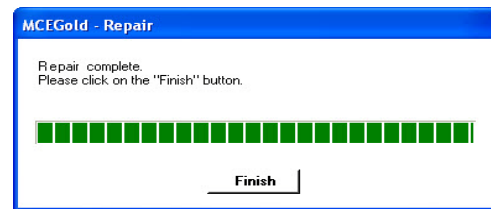
- Select **Update**.

Note: Selecting **Uninstall** removes the existing MCEGold software from your system. Uninstalling is not necessary for this update.

- The MCEGold Update window opens and displays a progress bar.




- Click **Finish** when the update or repair complete message is received.



- It may be necessary to restart your computer to finalize the installation.

## NEW FEATURES


### MTAP Link Configuration (M-Series Tester Only)

The MTAP ID program functions when the tester is connected to the motor via an MTAP. It is used to link or verify that the MTAP and asset are linked so that testing can proceed. To open the MTAP ID Link Configuration window click the MTAP icon  on the toolbar.

#### MTAP ID Section

The MTAP Link Configuration window opens. The MTAP ID will be automatically read by the software and displayed in the MTAP ID section of the window.





If you unplug from the *MTAP* and plug into a different *MTAP*, click the Refresh button  and the *MTAP* ID will update. This only works with a change of *MTAP*, to refresh an Active Asset you must close the *MTAP* Link Configuration window, select a new asset from the Site Navigator and click the *MTAP* icon on the toolbar.

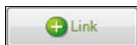
If an asset has been linked to the *MTAP* previously the Linked Asset identification will appear in the Linked Asset text box.

If the Linked Asset is not the asset you are going to test you need to unlink the asset and link the correct asset.

### Un-Link an asset

1. Click the Un-Link button  on the right.
2. Click **OK** to close the Link Configuration window.
3. Select the correct asset.
4. Click the *MTAP* icon on the toolbar.
5. Click the Link button  to link the current asset to the *MTAP* ID.


If no asset is currently linked to the *MTAP* ID then the Linked asset textbox will display “No Asset Linked”. Click **OK** or **Cancel** to close the *MTAP* Link Configuration window, select the correct asset, click the *MTAP* icon on the toolbar, and click the Link button


 to link the current asset to the *MTAP* ID.



### Active Asset Section

The software automatically reads and displays the identification of the selected asset. As with the *MTAP* ID section, if there is a previously linked *MTAP* to this asset the identification appears in the *Linked MTAP* text box.

If the Linked *MTAP* is not the one that the tester is currently attached to, click the **Un-Link** button.  Then click the **Link** button

 to link to the current *MTAP*. The *MTAP* ID will display in the *Linked MTAP* textbox.

If for some reason it is necessary to manually enter the *MTAP* ID, click the **Manual** button and enter the ID number in the textbox.

### Testing

After verifying the *MTAP* Link Configuration (the correct *MTAP* is linked to the correct Active Asset and the Active Asset is linked to the correct *MTAP*), click the **OK** button. The EMAX test screen appears.

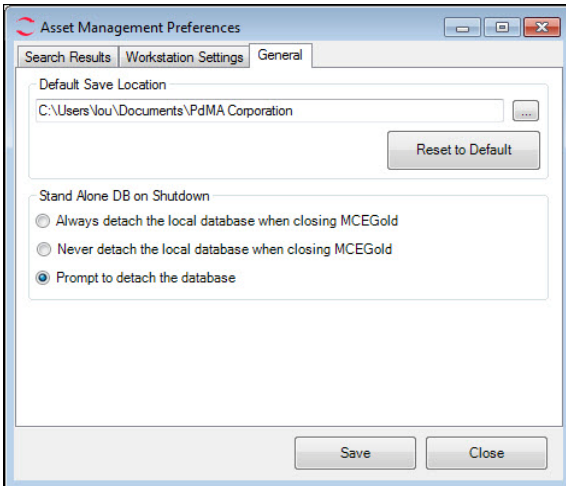
For all future tests of a linked *MTAP* and asset, the software will auto navigate to the proper asset when connected to the *MTAP* and then you select the test or EMAX Auto button on the toolbar is selected.

## Detach Database Selection

The options for detaching the database on shutdown are available from the Options menu. Select Options, Preferences.

### General

The selections on the General tab control the Default Save Location of the database and the disposition of the stand alone DB at shutdown.

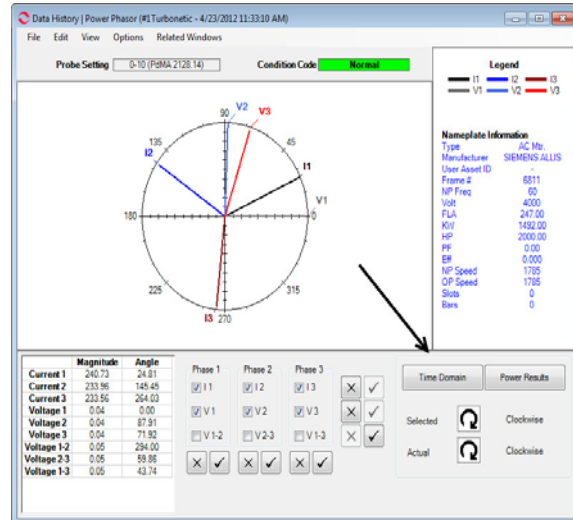


### Change Option at Shutdown

There are three options for handling the database at shutdown: *Always detach the local database*, *Never detach the local database*, and *Prompt to detach the database*. Click the option button in front of your selection and click **Save**. In the future you may come back to this window and change your settings.

## Power Phasor

In the Data History, Power Phasor window changes have been made to the lower right corner. Time Domain and Power Results buttons have been added.



### Time Domain Button

Clicking the Time Domain button opens a window displaying the Power Time Domain spectrum.

### Power Results Button

Clicking the Power Results button opens the Power Results window for the selected asset and Power test.

### Rotation Indicators

No changes can be made using the Rotation indicators. They are displayed for informational uses only.

## WatchList

In the MCEGold Network version an Asset Preview Pane has been added to the local WatchList.